



State Road (S.R.) 838/Sunrise Boulevard Roadway and Bridge Rehabilitation Project

**From West of Middle River Drive to East of North Birch Road
in the City of Fort Lauderdale**

Broward County, FL

Financial Project IDs: 441456-1-52-01 & 446181-1-52-01

**Virtual Public Meeting
Monday, May 11, 2026**

Virtual Public Meeting Orientation

Moderator & Presenter



Rebecca Guerrero
 Community Outreach Specialist
 Pinnacle Consulting Enterprises, Inc.

Virtual Public Meeting Format

Presentation, Q&A Session

- 5 p.m. to 5:30 p.m.
- 5:30 p.m. to 6 p.m.

The recording of this Virtual Public Meeting will be posted to www.d4fdot.com.

The Florida Department of Transportation is required to comply with various non-discrimination laws and regulations, including **Title VI of the Civil Rights Act of 1964.**

Public participation is solicited without regard to race, color, national origin, age, sex, religion, disability, or family status.

Persons wishing to express concerns about Title VI may do so by contacting either:

District Four

Florida Department of Transportation
District Four Title VI Coordinator

Sharon Singh Hagyan

(954) 777-4190

Sharon.SinghHagyan@dot.state.fl.us



Tallahassee Office

Florida Department of Transportation
State Title VI Coordinator

Lisa Bethancourt

(850) 414-4742

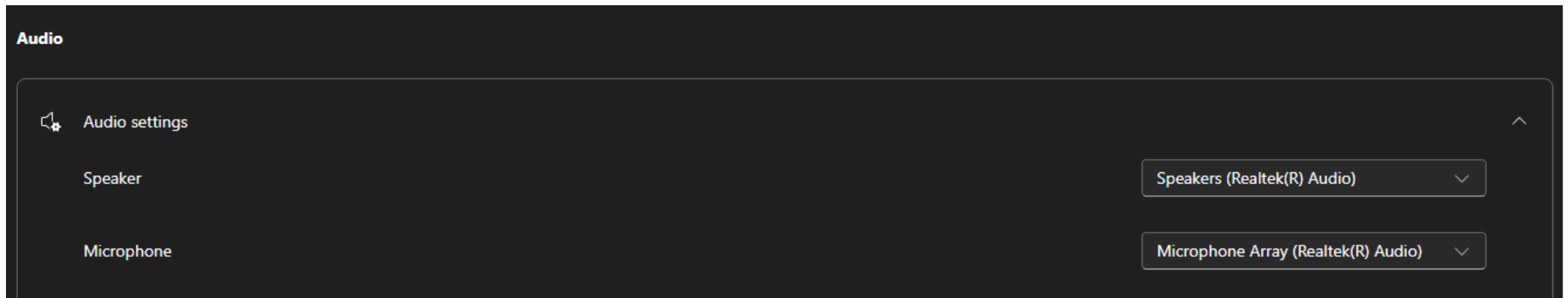
Lisa.Bethancourt@dot.state.fl.us



All inquiries or concerns will be handled according to FDOT procedure and in a prompt and courteous manner.

Participating In Microsoft Teams

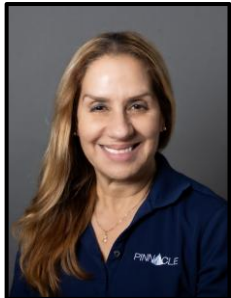
- This meeting is being recorded.
- All attendees **will remain muted** throughout the duration of the presentation.
- Attendees who wish to submit questions and/or comments can do so using the [Chat](#) button on the Control Panel. Responses will be provided during the question-and-answer portion at the end.
- During the Q&A session at the end of the presentation, click the [Raise Hand Button](#) on the Control Panel if you wish to speak. Your microphone will be unmuted when your name is called.
- If you experience technical difficulties, please contact Microsoft Teams Support at **+1 800-865-9408**.
- Should you lose audio during the session, please open the Microsoft Teams Audio Settings and make sure it is turned on to “Speakers” or “Headphones.” If this does not work, you may need to exit and re-enter the webinar.



Meeting the Team



Matthew May, P.E.
FDOT Construction Project Manager
Broward Operations



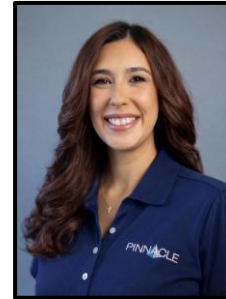
Sara Duffoo, P.E.
CEI Senior Project Engineer
Pinnacle Consulting Enterprises, Inc.



Al Banz, P.E.
CEI Electrical/Mechanical Senior Project Engineer
Pinnacle Consulting Enterprises, Inc.



Greg Spelios, P.E.
CEI Project Administrator
Pinnacle Consulting Enterprises, Inc.



Rebecca Guerrero
Community Outreach Specialist
Pinnacle Consulting Enterprises, Inc.



Kris McKirdy, P.E.
FDOT Design Project Manager
District Four



Ronald Sanchez, P.E.
Engineer of Record
HDR, Inc.

Elected Official Acknowledgment

Welcome!

Project Overview

Purpose: This project aims to enhance the safety, resiliency, and longevity of the infrastructure for our communities.

Length: 0.80 miles

Contractor: GLF Construction Co.

Construction Start: June 2026

Estimated Completion: Early 2028

Contract Cost: \$43.2 Million



Project Location



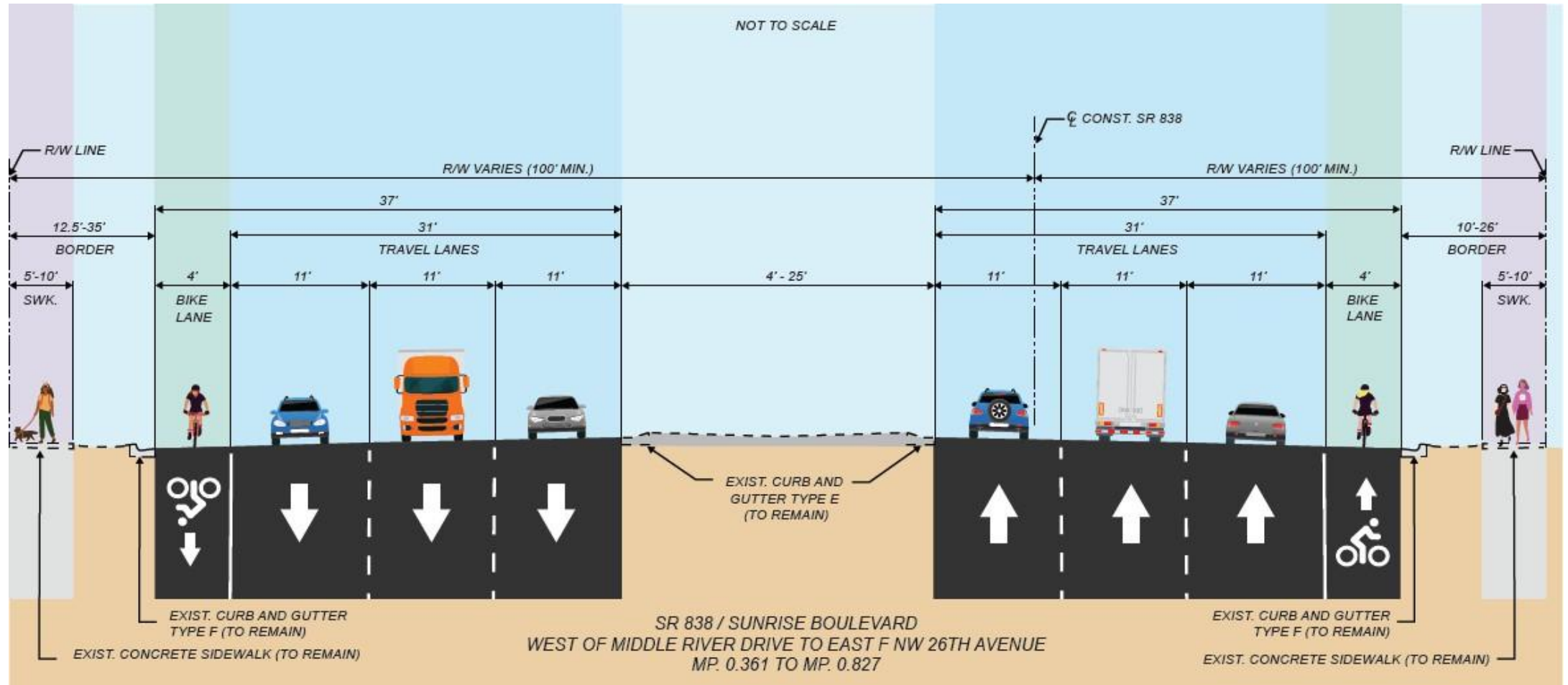
Roadway Project Improvements



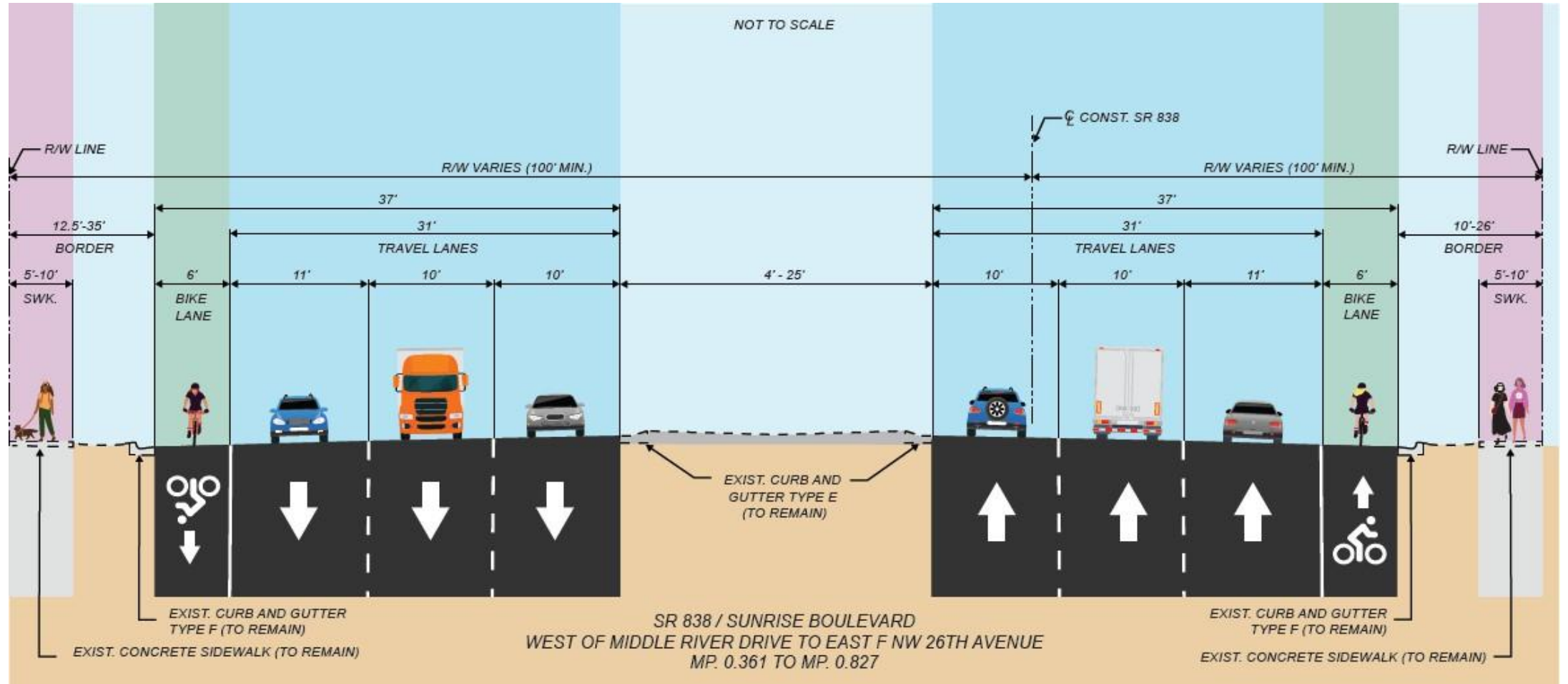
Mid-Block Crossing



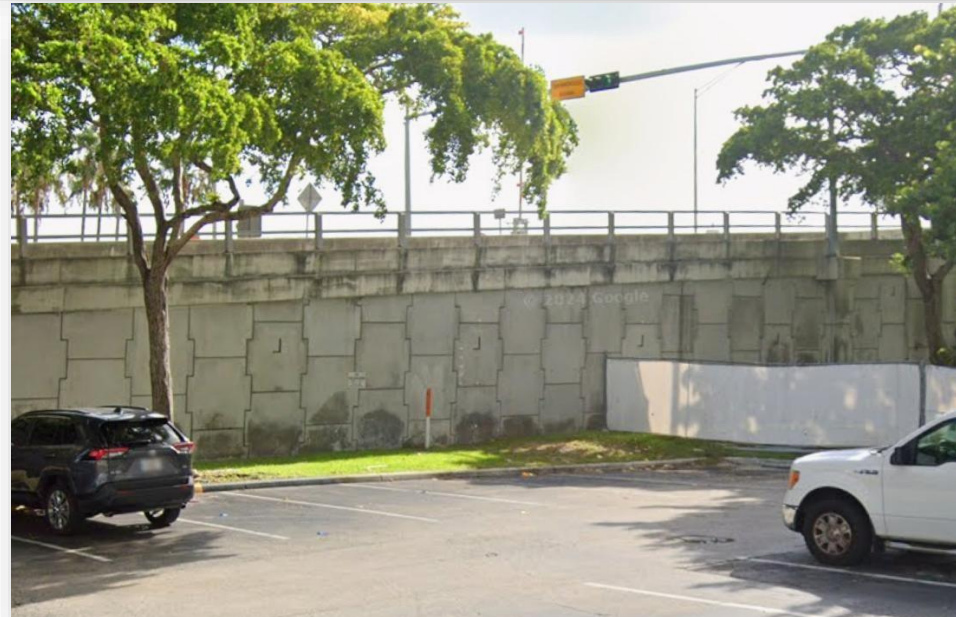
Existing Roadway Typical Section



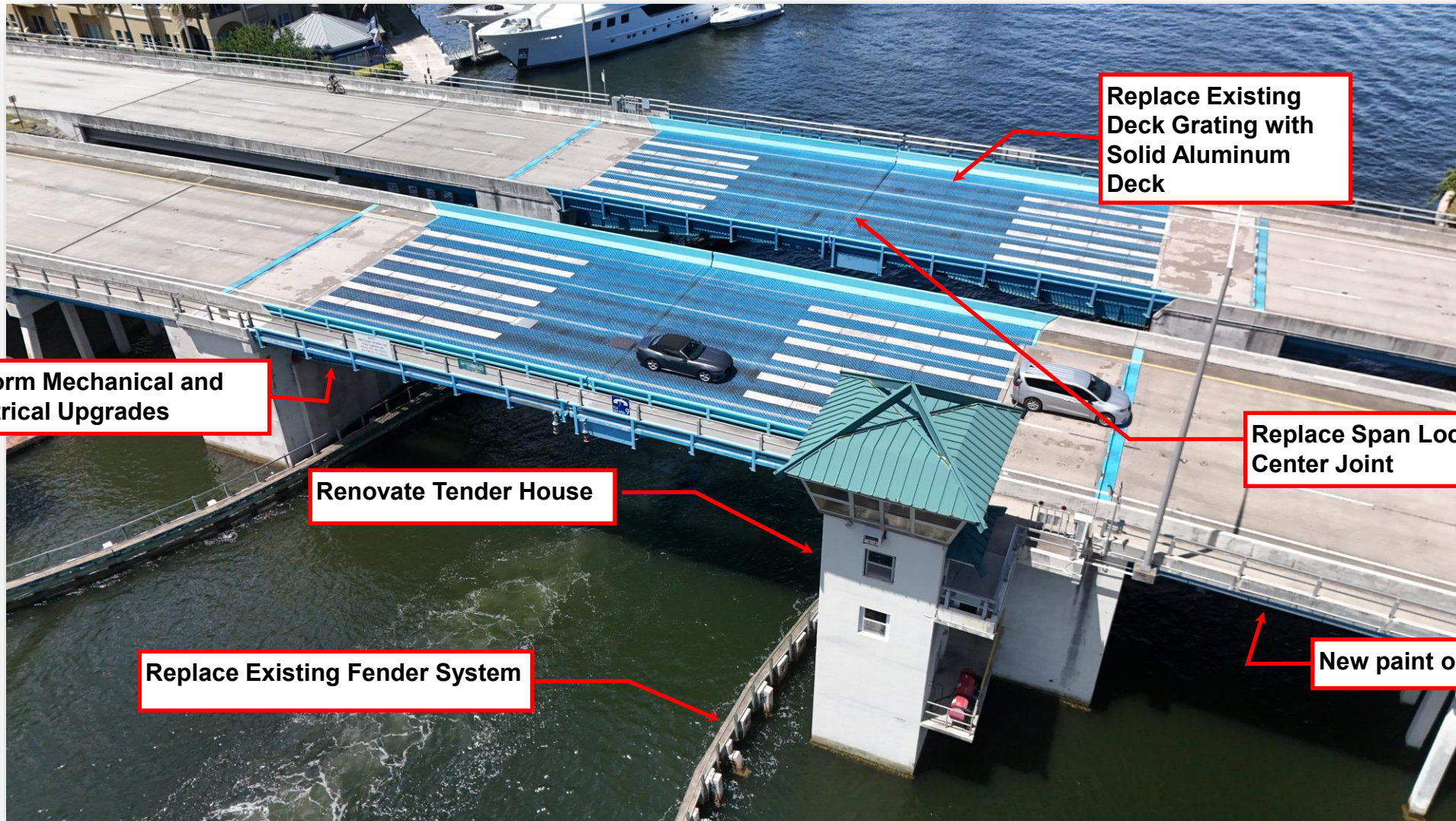
New Roadway Typical Section



Reinforced Support Walls



Bridge Project Improvements



Replace Existing Deck Grating with Solid Aluminum Deck

Perform Mechanical and Electrical Upgrades

Renovate Tender House

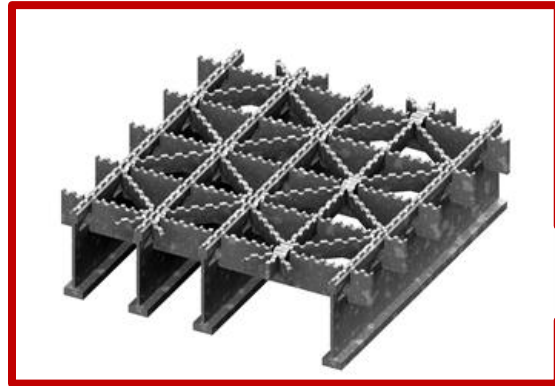
Replace Span Lock at Center Joint

Replace Existing Fender System

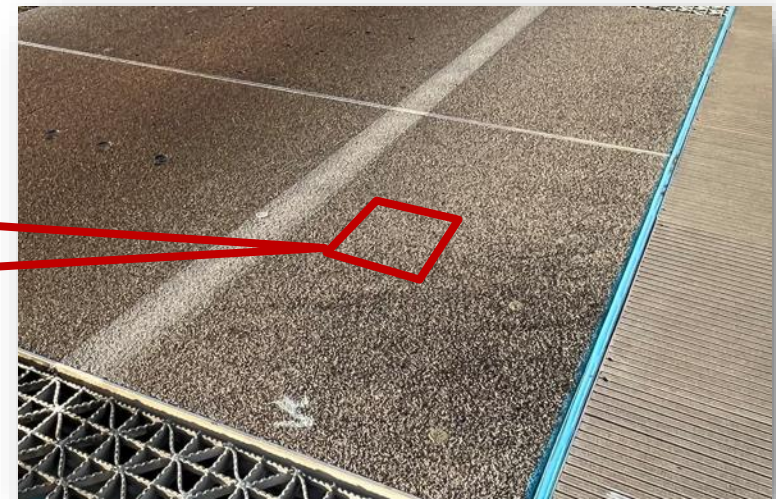
New paint on bridge

New Aluminum Deck

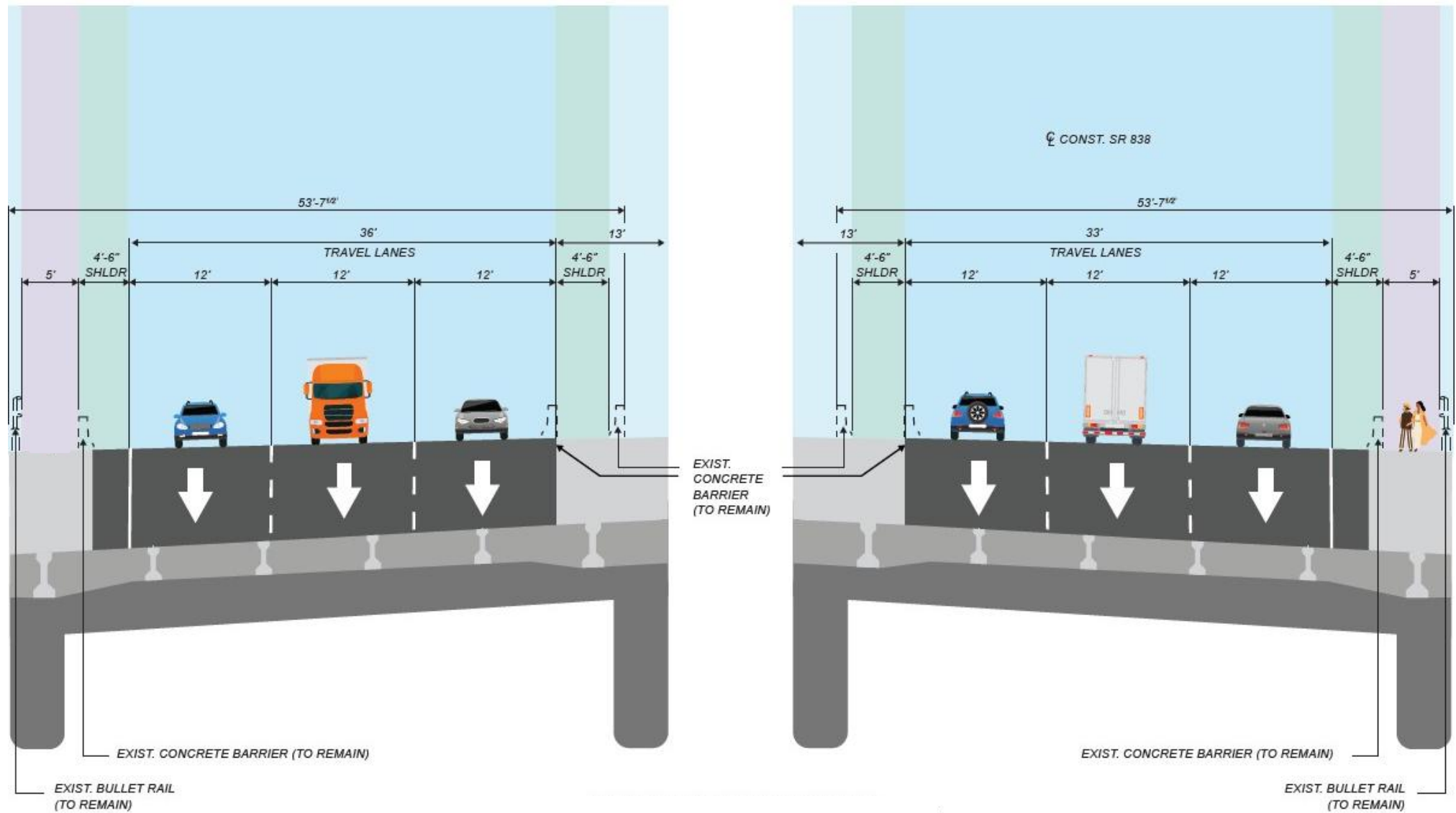
What does the bridge deck look like now?



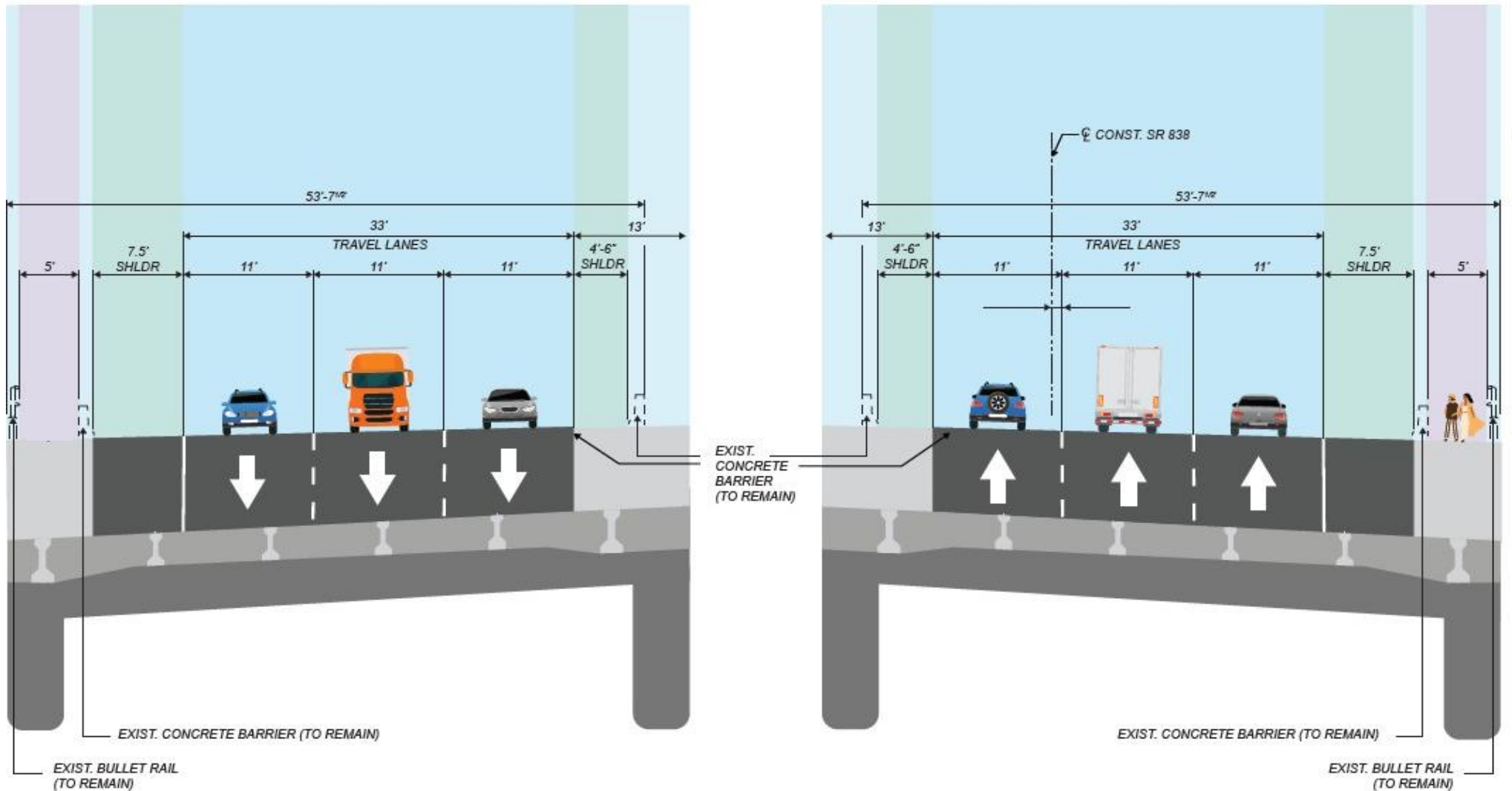
What will it look like after construction?



Existing Bridge Typical Section



New Bridge Typical Section



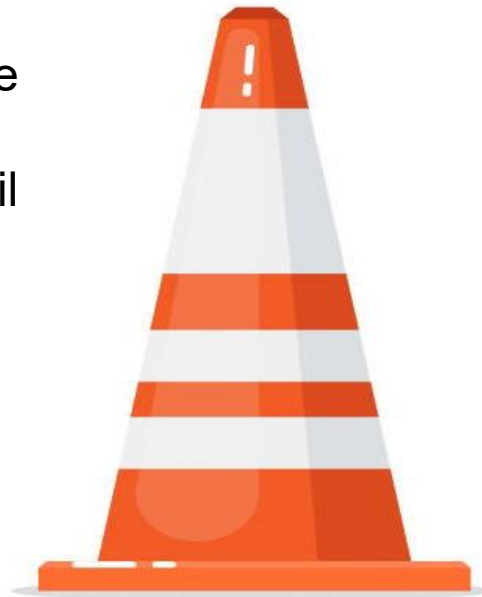
Traffic/Marine Impacts

Maintenance of Traffic

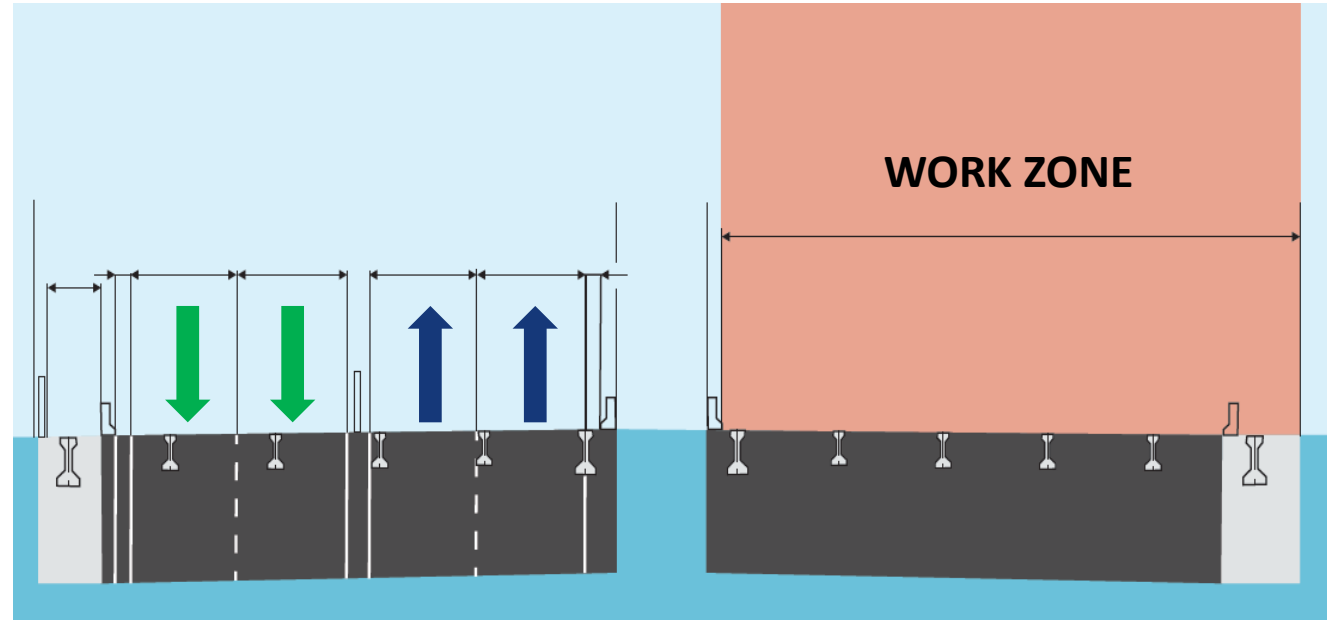
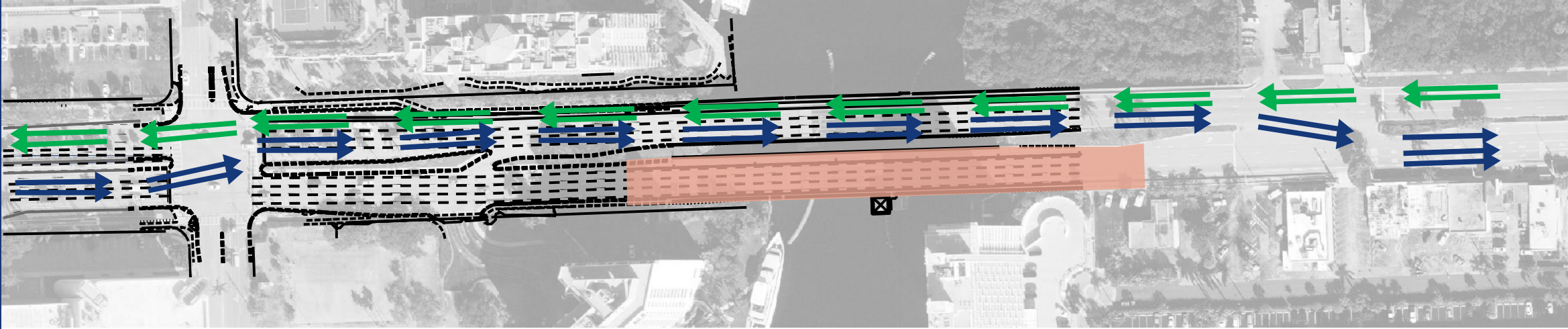
- Traffic will be maintained with two lanes in each direction on one side of the bridge.
- Pedestrian traffic will be maintained on the side of the bridge opposite active construction, and access to all properties on both sides of the bridge will always be maintained.
- Lane closures along S.R. 838/Sunrise Boulevard are permitted from 7:00 p.m. until 8:00 a.m. Sunday through Thursday nights, as needed.

Marine Impacts

- Marine vessel traffic will be maintained with temporary closure of only half the channel during fender construction.
- Modification to the drawbridge operation schedule will be coordinated with the U.S. Coast Guard and published via Notice to Mariners.

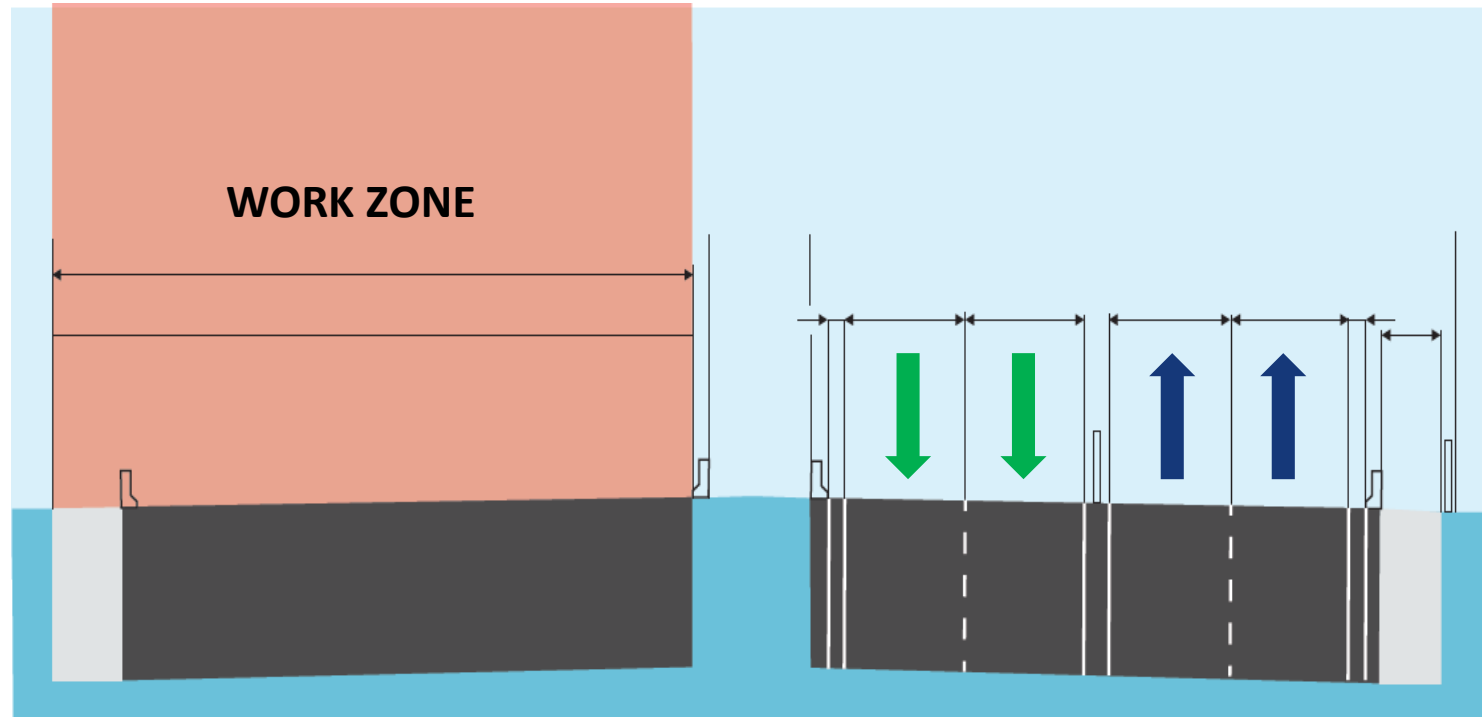
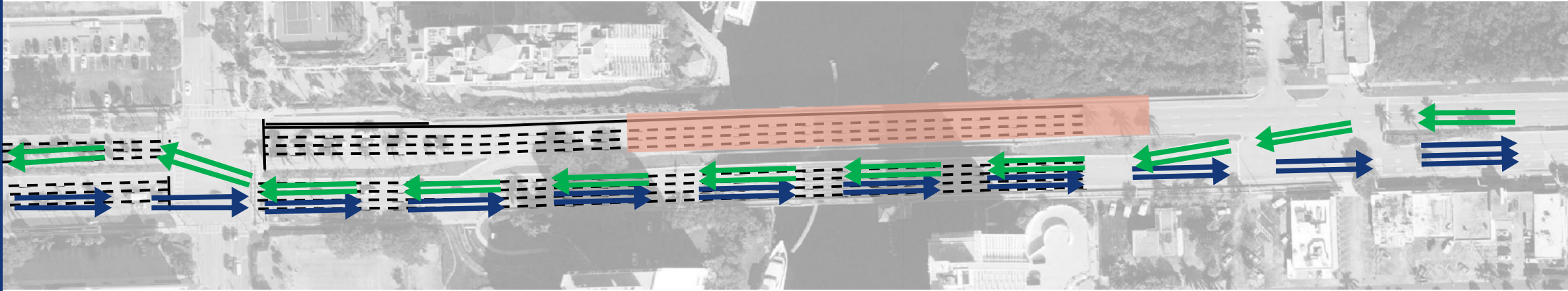


Eastbound Bridge Closure



	Closure
	WB
	EB

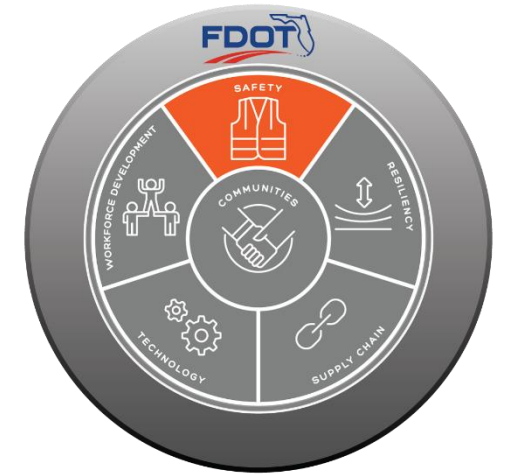
Westbound Bridge Closure



	Closure
	WB
	EB

Safety and Local Coordination Continued

- **Public Safety is our Top Priority!**
 - **Work Zone Signage & Maintenance of Traffic**
 - Advanced warning and project signage will be placed throughout the construction corridor to alert the traveling public
 - **Local Agency & Stakeholder Coordination**
 - The project team will continue working closely with local stakeholders including local municipalities, schools, neighborhoods and other local agencies to ensure safety standards are met and impacts to the public are minimized in any way possible
 - **Emergency vehicle access will be coordinated**



Lighted Message Board

Community Outreach

- To receive project-specific updates, please email Community Outreach Specialist Rebecca Guerrero at rguerrero@pinnaclecei.com.
- A weekly press release will be distributed every Friday.
- Additional project-specific information can be found on the website.
- The recording of this Virtual Public Meeting will be posted to www.d4fdot.com.

*****All project updates will be posted to the District Four website.*****

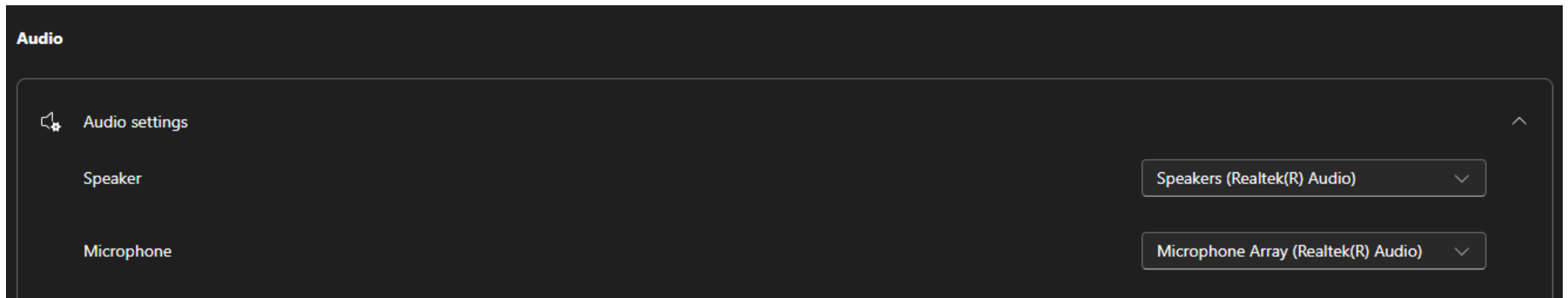


Scan this QR code to go to the District Four Website.

www.d4fdot.com

Reminder for Participating In Microsoft Teams

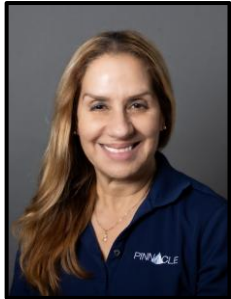
- This meeting is being recorded.
- All attendees **will remain muted** throughout the duration of the presentation.
- Attendees who wish to submit questions and/or comments can do so using the [Chat](#) button on the Control Panel. Responses will be provided during the question-and-answer portion at the end.
- During the Q&A session at the end of the presentation, click the [Raise Hand Button](#) on the Control Panel if you wish to speak. Your microphone will be unmuted when your name is called.
- If you experience technical difficulties, please contact Microsoft Teams Support at **+1 800-865-9408**.
- Should you lose audio during the session, please open the Microsoft Teams Audio Settings and make sure it is turned on to “Speakers” or “Headphones.” If this does not work, you may need to exit and re-enter the webinar.



Live Question & Answer



Matthew May, P.E.
FDOT Construction Project Manager
Broward Operations



Sara Duffoo, P.E.
CEI Senior Project Engineer
Pinnacle Consulting Enterprises, Inc.



Al Banz, P.E.
CEI Electrical/Mechanical Senior Project Engineer
Pinnacle Consulting Enterprises, Inc.



Greg Spelios, P.E.
CEI Project Administrator
Pinnacle Consulting Enterprises, Inc.



Rebecca Guerrero
Community Outreach Specialist
Pinnacle Consulting Enterprises, Inc.



Kris McKirdy, P.E.
FDOT Design Project Manager
District Four



Ronald Sanchez, P.E.
Engineer of Record
HDR, Inc.

Contact Us

Throughout the project, questions or comments can be submitted via email or phone.

Matthew May, P.E.
FDOT Construction Manager



Matthew.may@dot.state.fl.us



(954) 649-3220

Greg Spelios, P.E.
CEI Project Administrator



gspelios@pinnaclecei.com



(305) 321-7772

Rebecca Guerrero
Community Outreach Specialist



rguerrero@pinnaclecei.com



(754) 444-0093



FDOT Safety Message





**Thank you for attending tonight's
Virtual Public Meeting!**